

# Century Club Private Event Spaces



61 - 63 Shaftesbury Ave. | London | W1D 6LQ  
[events@centuryclub.co.uk](mailto:events@centuryclub.co.uk) | [@century\\_soho](https://www.instagram.com/century_soho)

[ENQUIRE HERE](#)

# The Venue

Located in the heart of Soho, Century Club spans 24,000 square feet across five floors on Shaftesbury Avenue.

The club's 19th century building has a colourful past. It once housed the Ford Motor Company's first motor showroom in London and in later years was a set design warehouse for West End Theatre productions. Today, among its five storeys you'll be met with chic urban interiors with retro tones.

Our dedicated events team are always on hand to take care of every detail; while ensuring each guest has an unforgettable time at Century Club. Whether you wish to host a corporate gathering, a milestone birthday celebration or a private dining experience for up to 80 guests, a private screening night, wrap party, or even a completely bespoke party for up to 450 guests, no enquiry is too much.

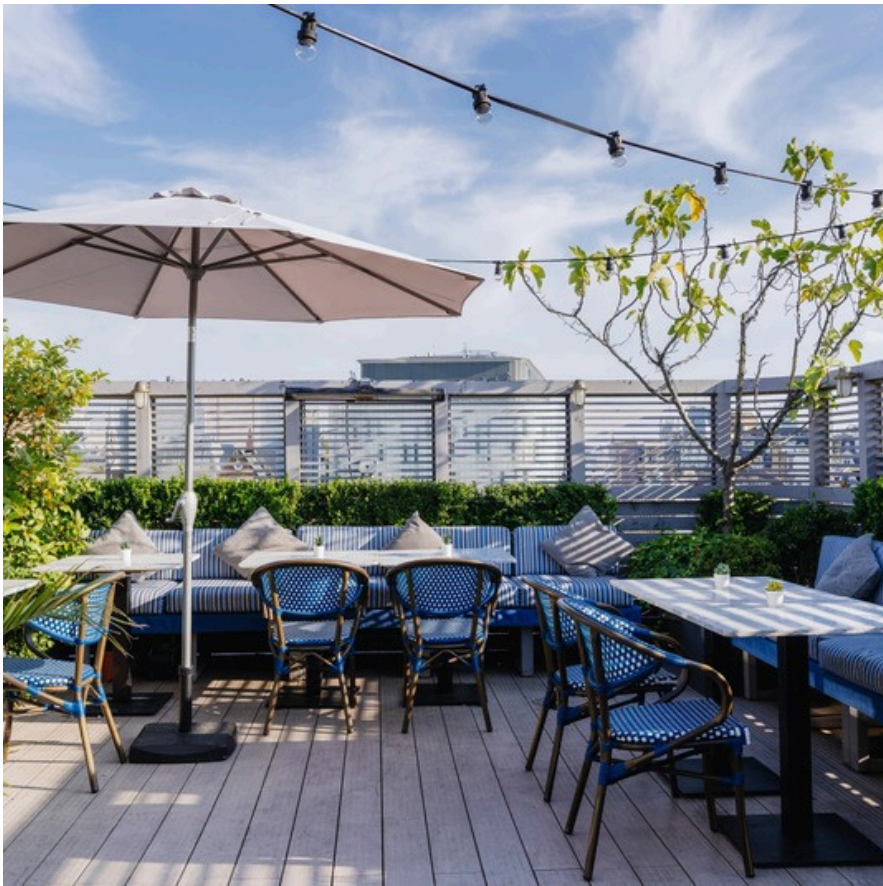




# The Roof Terrace

Private Dinner (capacity)	Theatre Style (capacity)	Reception (capacity)	Dimensions (cm)
60	40	200	1000 x 1300

Century Club’s Roof Terrace is one of Soho’s largest outdoor spaces, with panoramic views from Shaftesbury Avenue to the London Eye and BT Tower. A fully retractable glass roof makes it usable year-round, open to the sun or enclosed for comfort. With a full bar, ambient lighting, and high-spec sound, it’s ideal for everything from corporate gatherings and wedding receptions to drinks with a view.





# Green Room

Private Dinner (capacity)	Theatre Style (capacity)	Reception (capacity)	Dimensions (cm)
80	80	150	1264 x 700

The Green Room is a versatile, design-led space with natural light, panelled walls, and built-in AV. Flexible by nature, it lends itself to product launches, presentations, conferences, dinners, and more. A considered backdrop for gatherings that call for something a little different.

When hiring the Green Room includes access to the adjoining outer terrace for up to (25 guests)

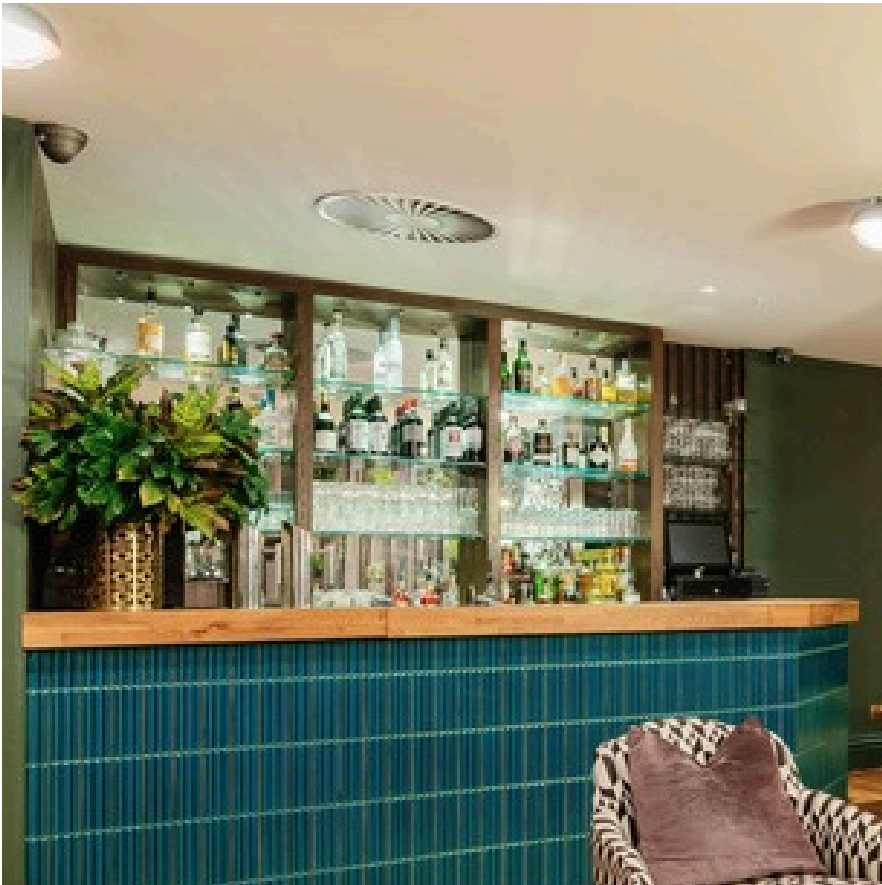




# Club Lounge

The Club Lounge on the second floor brings together timeless design and quiet sophistication. Wooden floors, lounge seating, and a curated art collection create a rich, inviting setting. With views over St. Anne’s Church and soft natural light, it offers a calm backdrop for screenings, drinks receptions, private dinners, or product launches

Private Dinner (capacity)	Theatre Style (capacity)	Reception (capacity)	Dimensions (cm)
40	40	80	2087 x 1092





# Meeting Rooms

Wardour (capacity)	Shaftesbury (capacity)	Compton (capacity)	Broadwick (capacity)
22	16	10	10

Century Club offers four meeting rooms, accommodating between 10 and 22 guests. Each room balances considered design with practical features, including high-speed Wi-Fi and a high-definition screen. Ideal for board meetings, workshops or client conversations. Private access via Wardour Street is available for added convenience and discretion

Book online: [Century Club - Book a Meeting Room](#)





# Full Venue Hire

For moments that call for something more expansive, Century Club is available for full venue hire. With space for up to 450 guests across four floors, it offers the freedom to shape the event entirely around your vision.

From lighting and AV to bespoke layouts and styling, each space can be adapted to suit the occasion, whether you're planning a brand showcase, private celebration, wrap party, opening or closing ceremony, or a large-scale launch.

With time to prepare and the Club to yourself, the experience becomes yours to define.





# Weddings

Begin with a heartfelt ceremony in our elegant Green Room, fully licensed for civil ceremonies.

Afterwards, head up to the Roof Terrace to toast the moment with a glass in hand and the Soho skyline as your backdrop, the perfect spot for unforgettable photos.

Then, return to the Green Room for a tailored wedding breakfast, before ending the evening back on the terrace, dancing under the stars, a perfect close to a day that's entirely your own

[View our brochure: Wedding Brochure](#)



# Catering

At Century Club, culinary offerings are crafted with precision and purpose. Whether a continental breakfast, delegate menu, refined dinner, or thoughtfully composed wedding feast, each dish is designed to complement the character of your event.

Ingredients are carefully selected to ensure balance and clarity.

Our mixologists prepare both timeless classics and Century Club's signature cocktails with attention and subtlety, delivering drinks that enhance the occasion without excess.



# Frequently Asked Questions

Can we brand the space or bring in custom styling?

*Yes. We welcome brand activations and styling, as long as it doesn't damage the space*

Do you require a deposit?

*Yes. A deposit is required to secure your booking. Full payment terms will be outlined in your agreement*

Are children allowed at private events?

*Yes, children are welcome at private hire events, though under-18s must be accompanied by an adult and will need to leave by 11 pm. Full terms will be outlined in your agreement*

Do you have a late licence?

*Yes, subject to availability and supplement charges apply*

Are dogs allowed at the venue?

*Yes. Your four-legged furry friends are welcome*

Is there parking at the venue?

*We don't have on-site parking, but there are several public car parks within walking distance of the Club.*



# Contact Us



020 7534 3080



events@centuryclub.co.uk



www.centuryclub.co.uk



61 - 63 Shaftesbury Ave, London, W1D 6LQ



@century\_soho



To discuss your event, please complete our enquiry form. [Enquiry form](#)

